

IP CAMERA MANUAL

Contents

- Wireless Camera Quick Setup Guide by mobile phones2-3**
- Wired connection Camera Quick Setup Guide.....4-9**
- Internet explorer connection Setup Guide.....9-13**
- Setup WIFI Via PC client software.....13-14**
- Setup WIFI Via IE browser.....14**
- How to Add IP Camera on Camhipro14-16**
- IP CAMERA software and manual download.....16**

YUCHENG/ESUNSTAR
Shenzhen EsunStar Technology Co., Ltd.
Skype:hkcctv2008@outlook.com
Email:quan.qi@zviewtech.cn
Website:http://www.yucvision.com

Wireless Camera Quick Setup Guide

(The use of mobile phones connect the camera via wi-fi hotspots)

- 1, Connect power supply to camera.(Please do not connect the Ethernet cable to the camera)
- 2, Install App"Camhipro "on your Phone,it is It is compatible with Android, IOS and HarmonyOS
- 3, Connect your phone to camera WiFi, (usually camera WiFi SSID should be "IPCAM-XXX") , password is 01234567

1 Run the mobile APP "Camhipro" just installed

2 Add device

3 IP camera

4 New device

5 Confirm power

6 Confirm access network c...

7 Select distribution network...

Power on the device and wait for about 30 seconds to confirm that the device is working.

Power is on, next step

Connected network cable

Not connected to the network cable

Acoustic distribution network equipment

AP distribution network equipment

If the device has a network port, it is recommended to add a network cable to add; the network port light on the network cable socket flashes

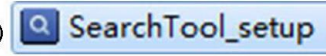
If you cannot determine by shape, please refer to the manual to make a choice.

Wired connection Camera Quick Setup Guide

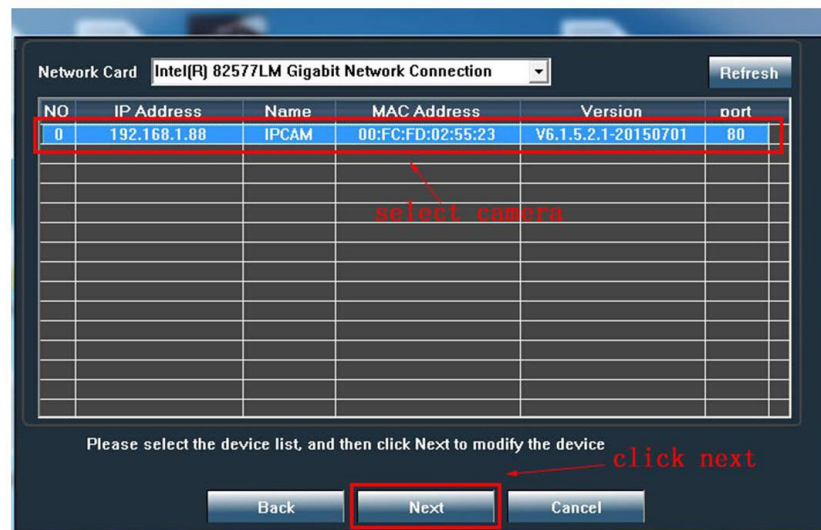
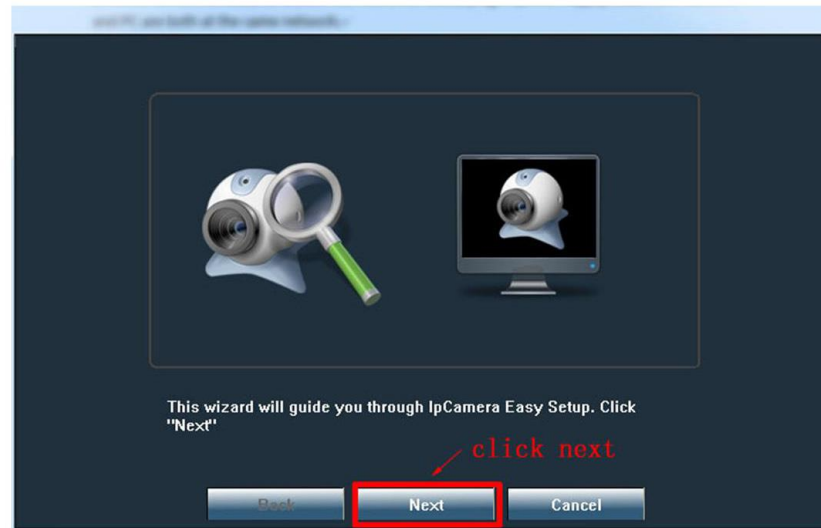
Connect camera to router or switch with Ethernet cable, plug in power supply, make sure camera and PC are both at the same network.

1, Install and use search tool software to detect camera. (search tool software is attached in

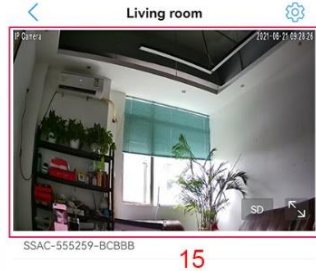
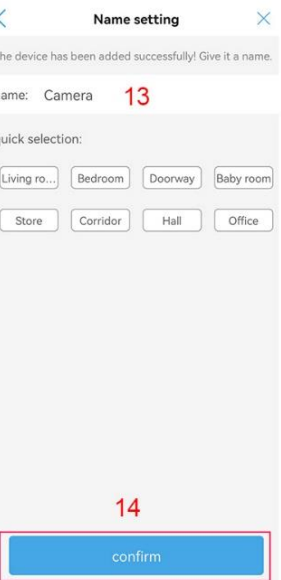
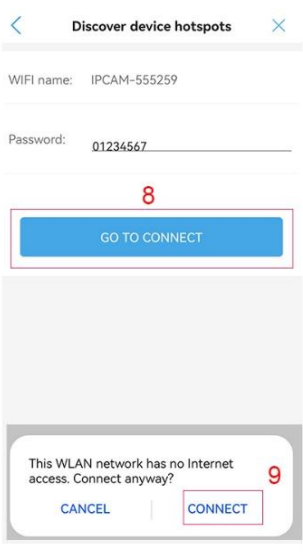
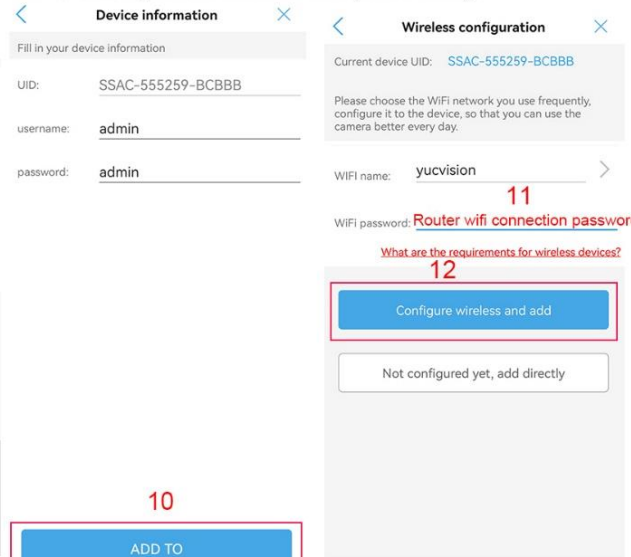
mini CD manual file named "SearchTool_setup")



Double click search tool software icon



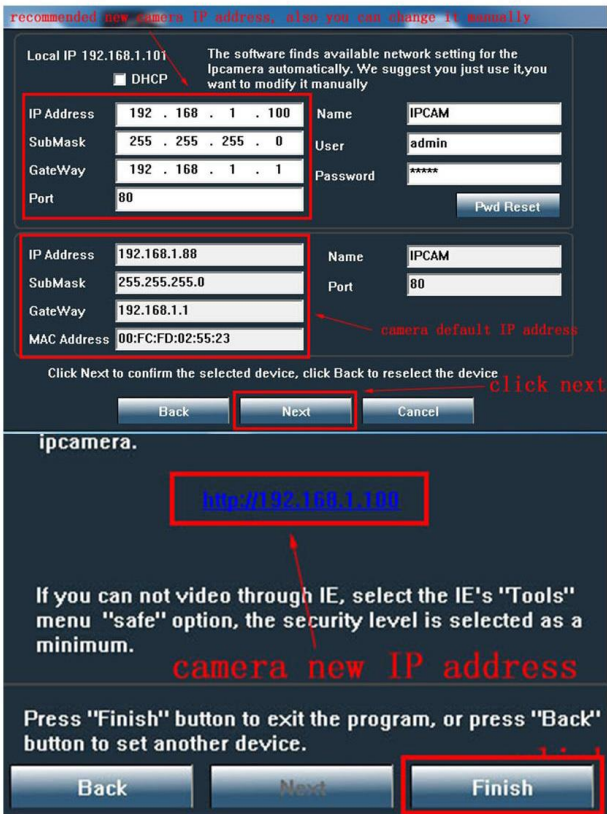
4, Connect your camera to WAN (home WiFi).



Android APP download



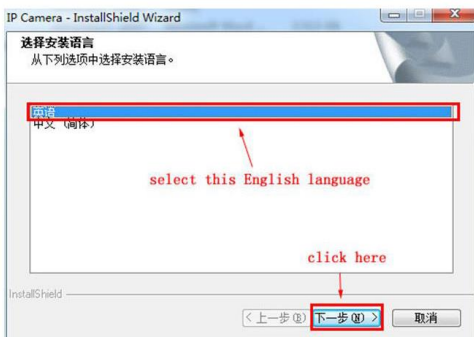
IOS APP download



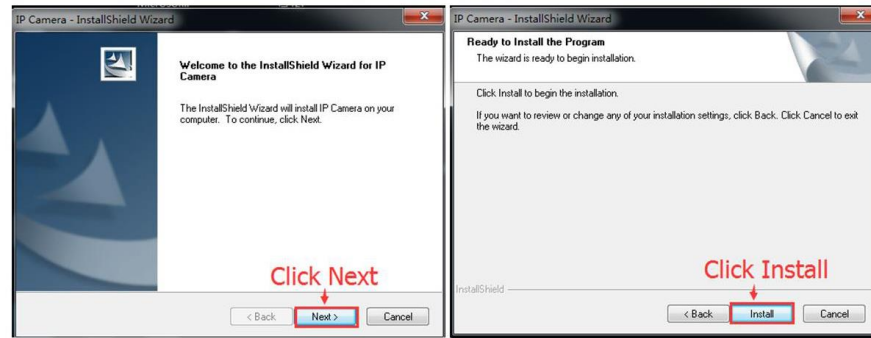
Now camera new IP address 192.168.1.100 is the correct one of your network.
 Note: our camera default IP address is 192.168.1.88, it will work if your network gateway is 192.168.1.1, then you do not need to change camera default IP address, otherwise you need to use search tool software to change camera IP address to the correct one.
 2, Install PC client software. (PC client software is used for accessing your camera at local network, it is attached in Mini CD manual file named "PC Client_Setup")

PC Client_Setup

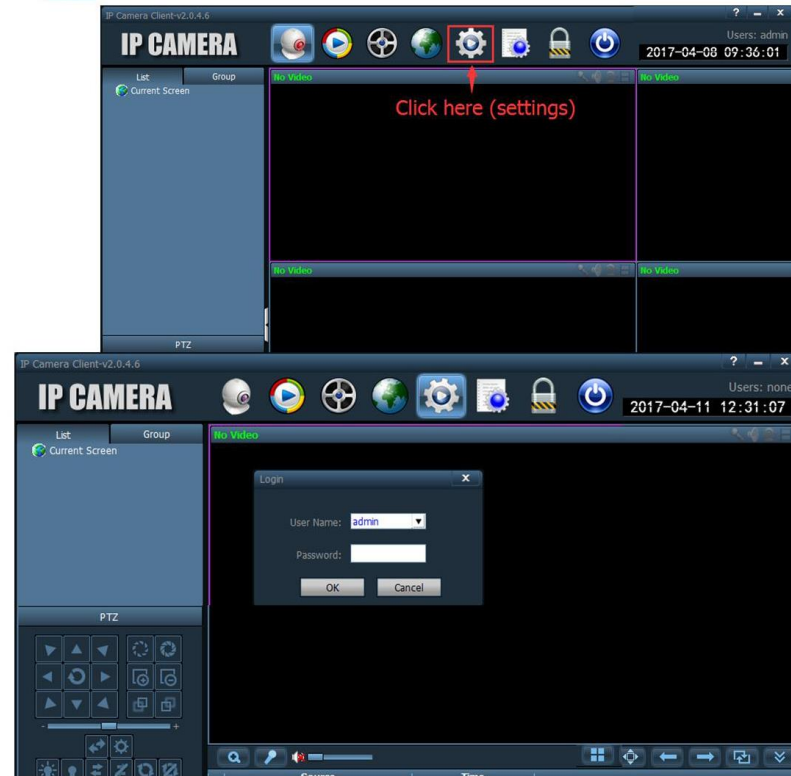
3, access camera on PC client software. Double click IPC client software icon



5

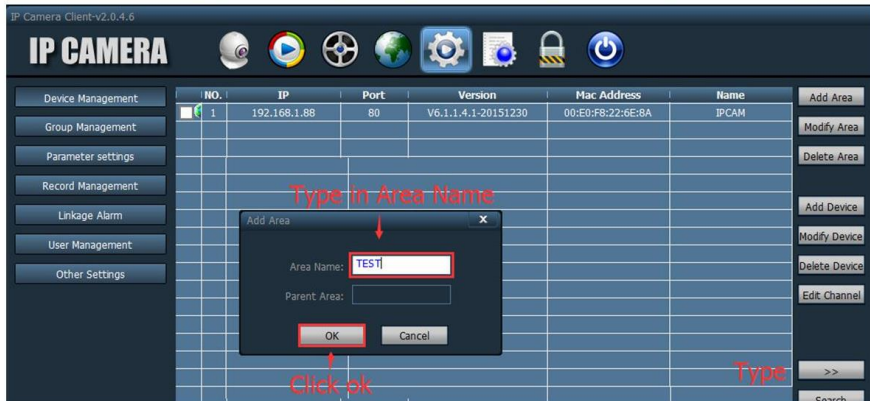
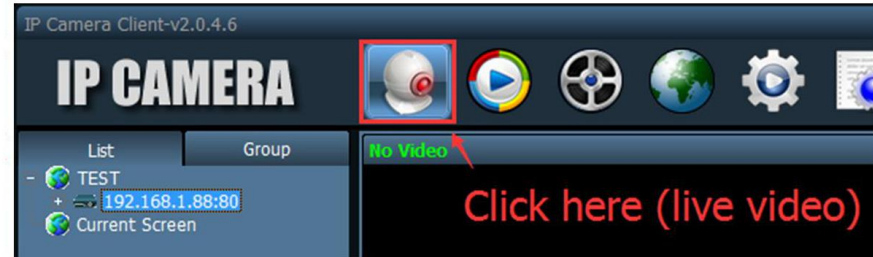
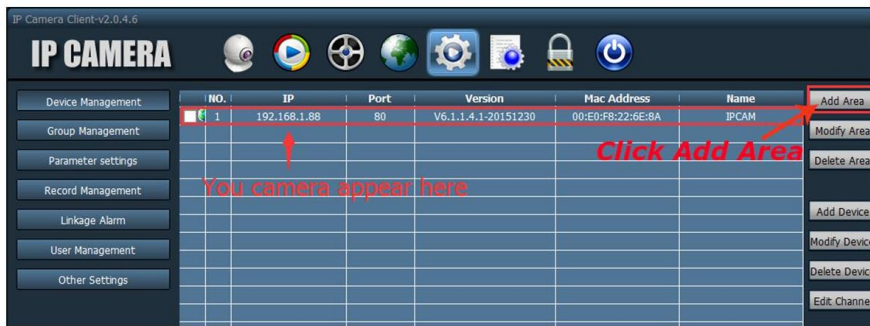
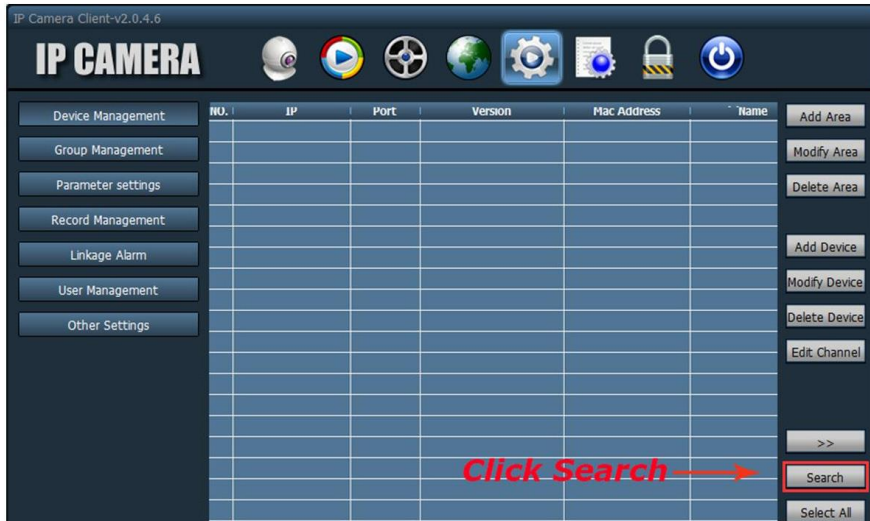


3, access camera on PC client software. Double click IPC client software icon



Note: PC client software user name is admin, no password, nothing need to type in.

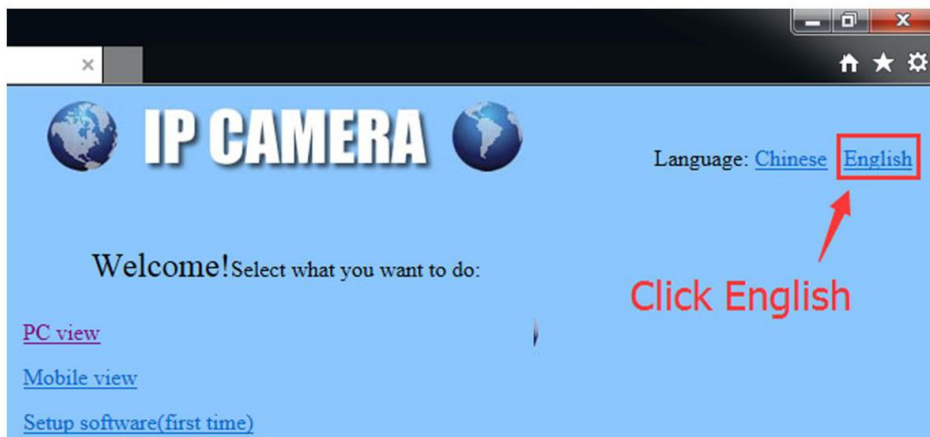
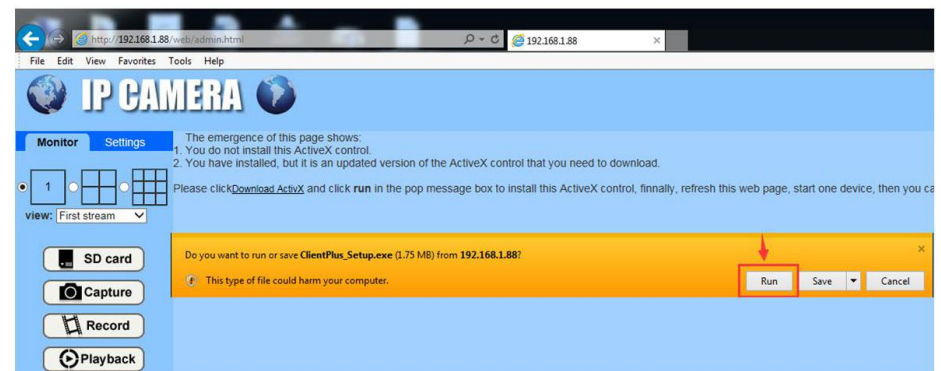
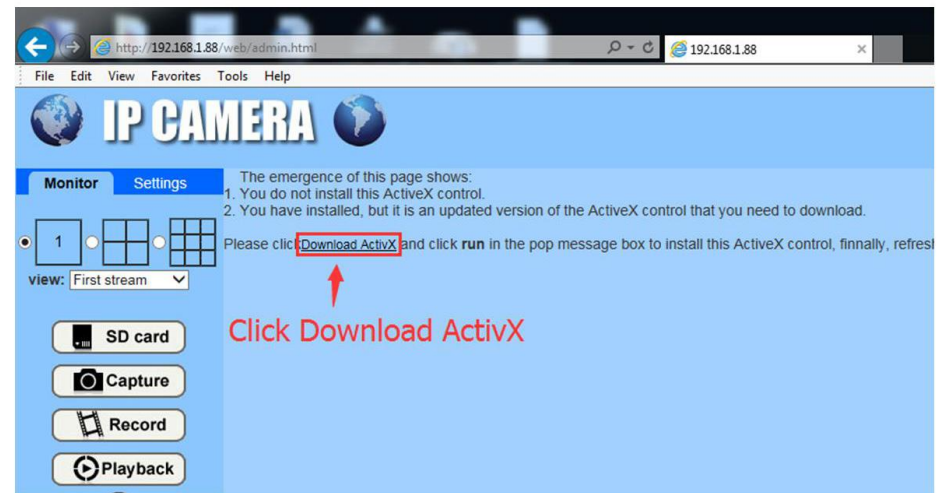
6

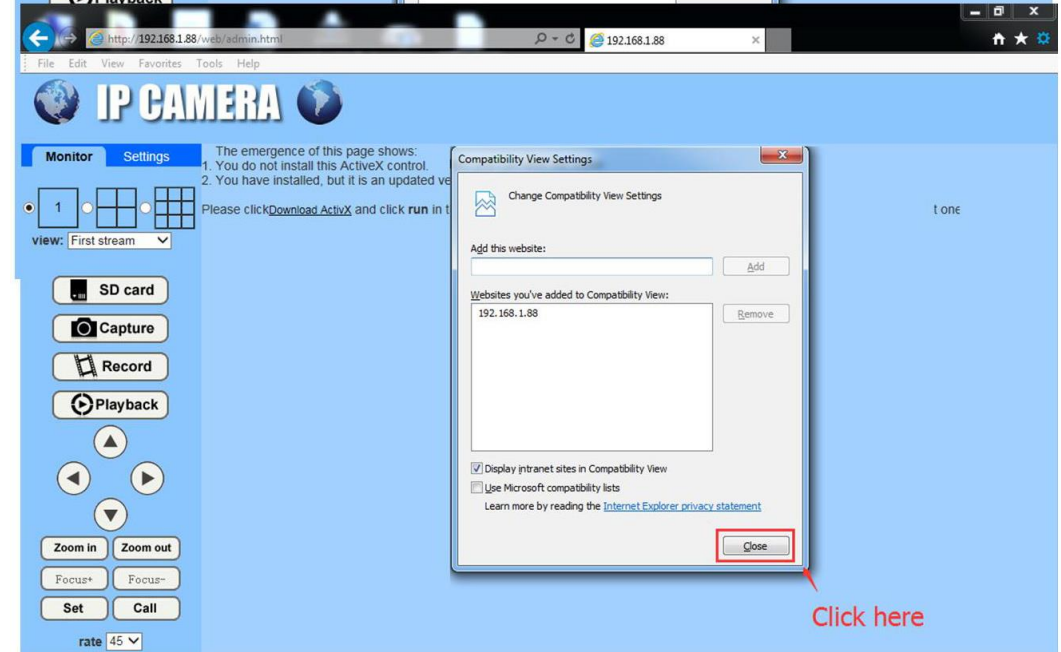
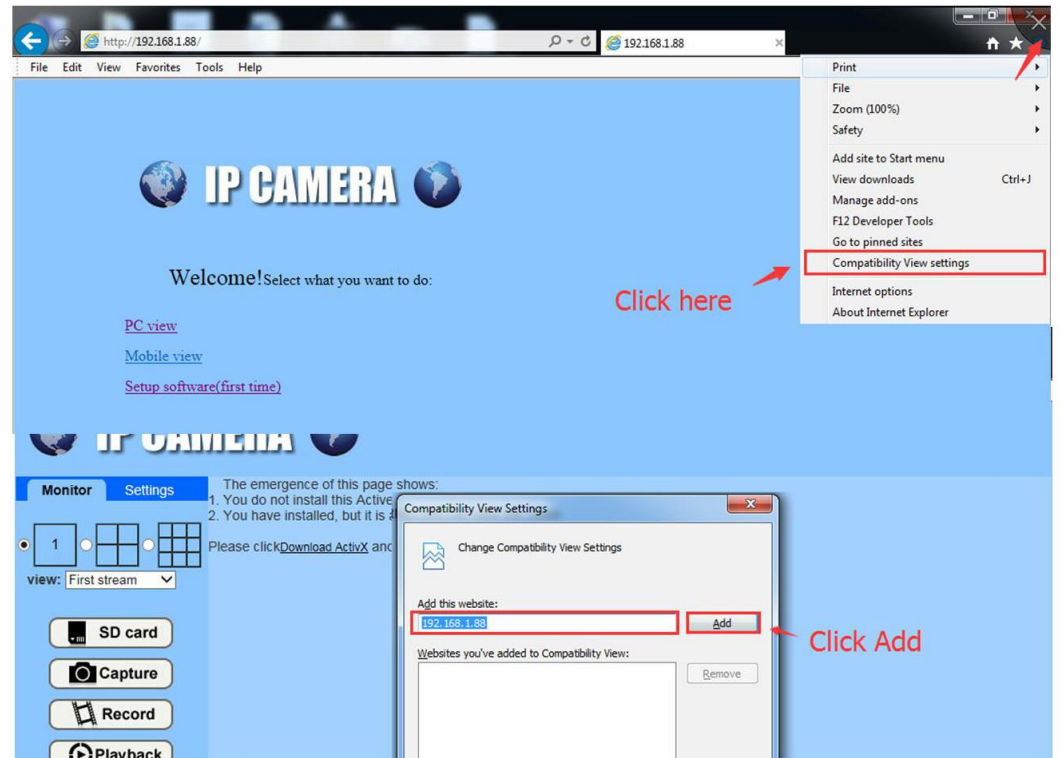
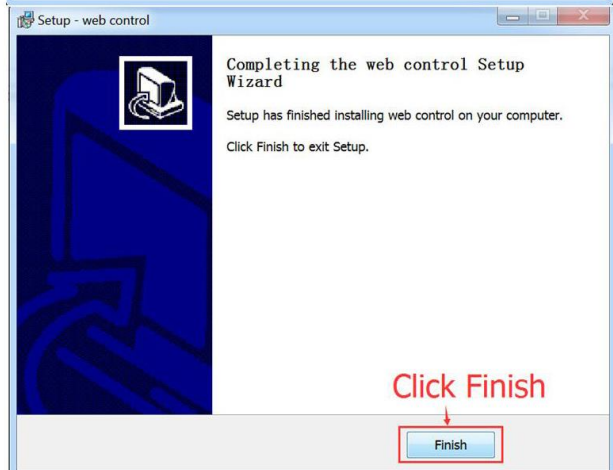
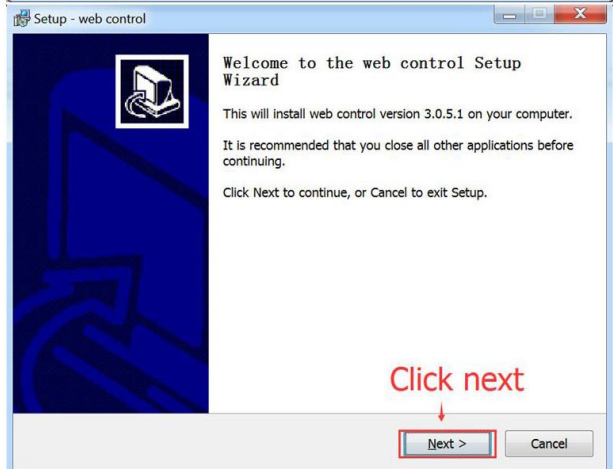
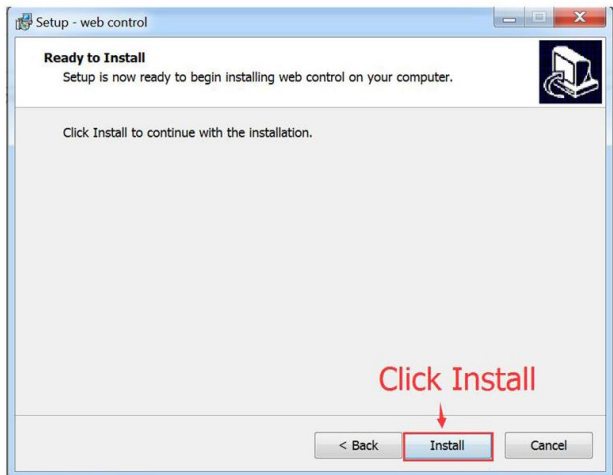


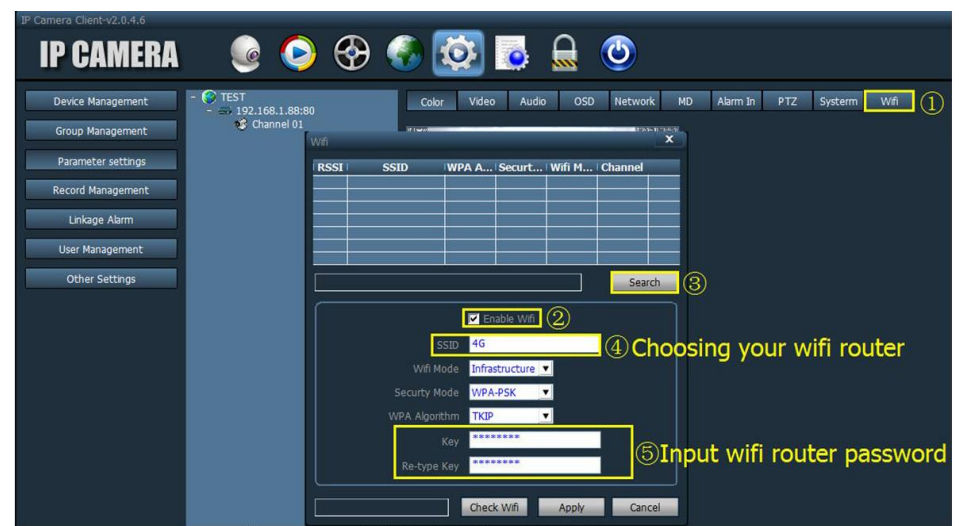
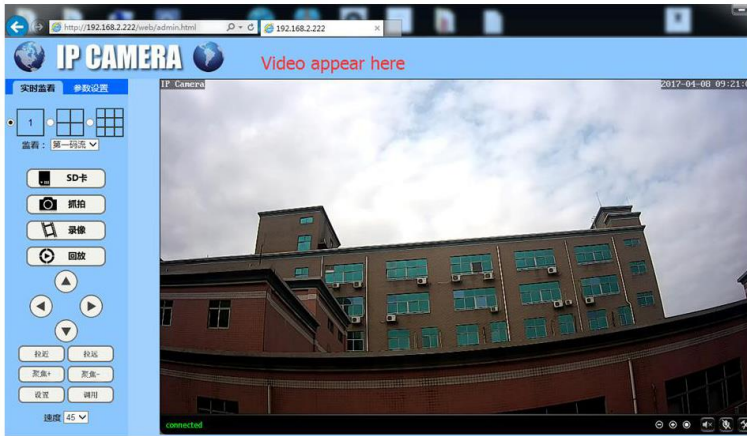


Internet explorer connection Setup Guide

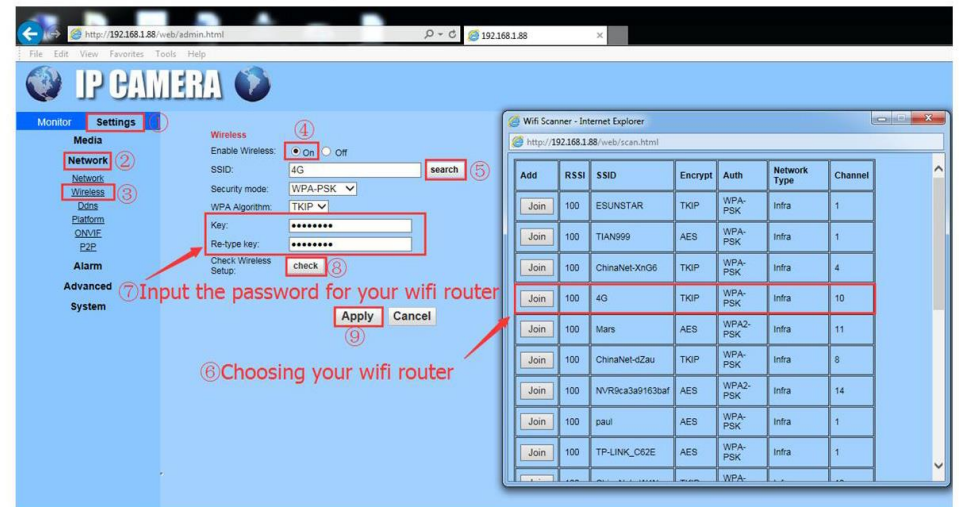
Type in camera IP address 192.168.1.88 on IE and click enter.





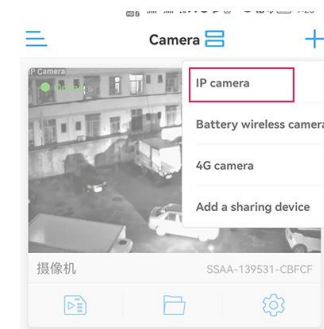
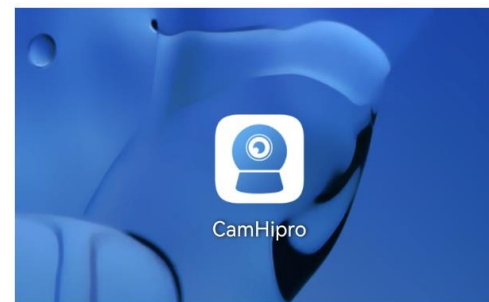


Setup WIFI Via IE browser

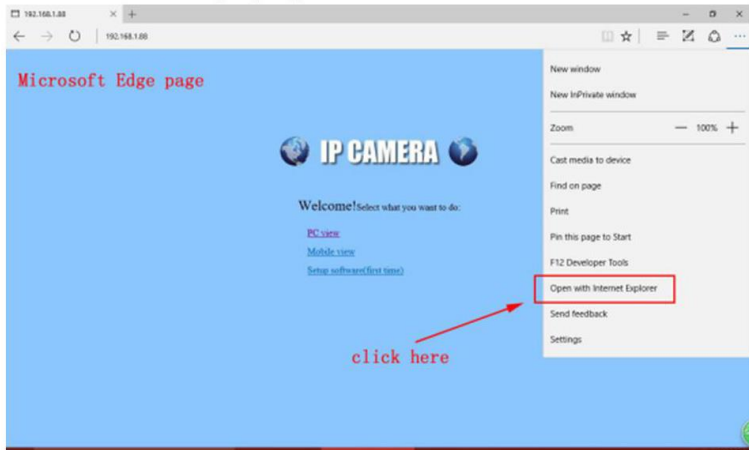


How to Add IP Camera on CamHiPro

1, Make sure camera is connected to router by cable or WiFi, also you can access camera on IE or our PC client software, then install app CamHi on your phone, app CamHi is both for Android and iPhone.



Note: If you use windows 10 system, please click "open with Internet Explorer" on Microsoft Edge page.

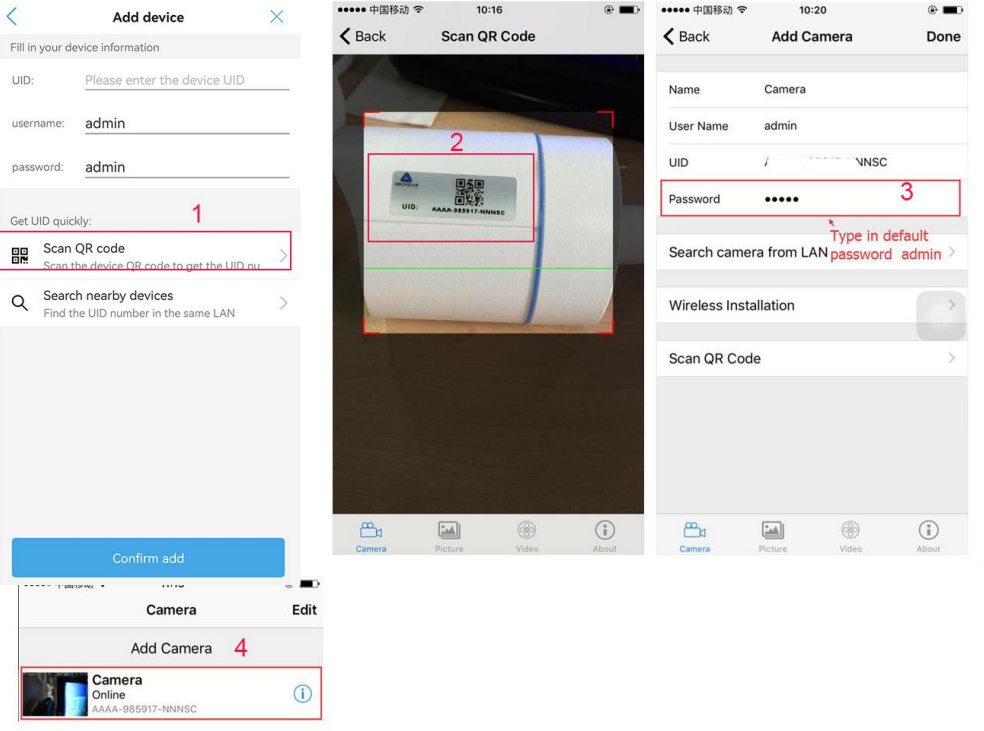


Setup WIFI Via PC client software

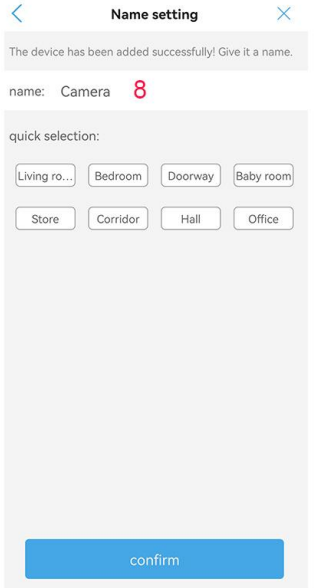
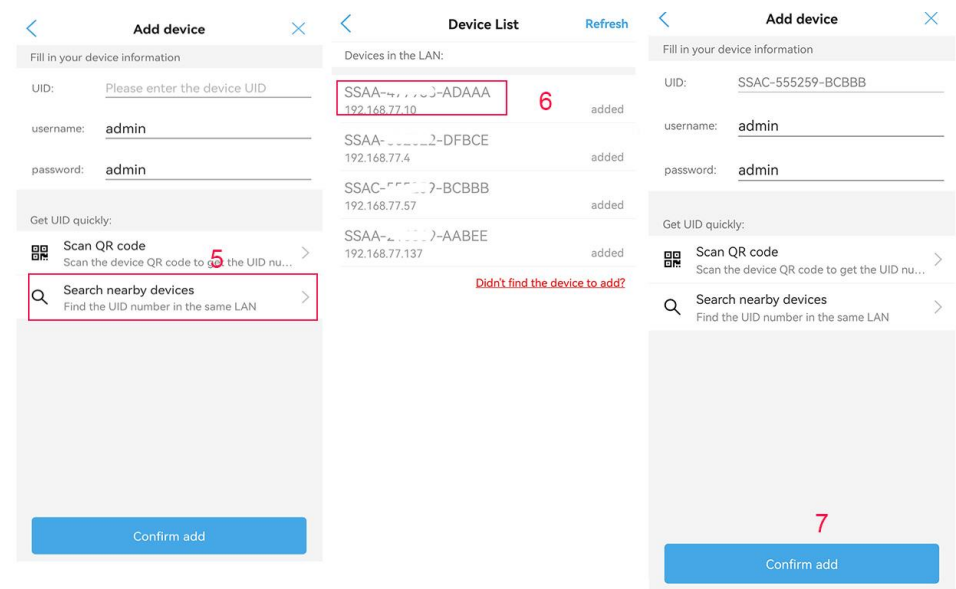


2, There are 3 ways to add IP camera on Camhipro. ①Scan camera QR code, ②Search camera from LAN.

①Scan camera QR code: there is a QR code label on camera housing, scan this QR code.



②Search camera from LAN: make sure your phone is connected to your home WiFi.



All software, manuals and video tutorials, <http://www.yucvision.com/camhi-en.htm>

please go to our website to download: